



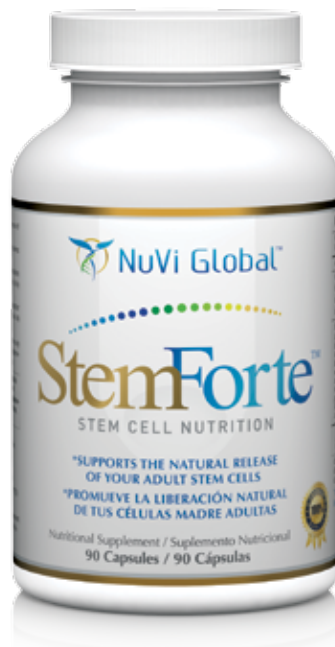
Ginsenosides or **panaxosides** are a class of steroid glycosides, and triterpene saponins, found exclusively in the plant genus *Panax* (ginseng).

Ginsenosides have been the target of research, as they are viewed as the active compounds behind the claims of ginseng's efficacy. Because ginsenosides appear to affect multiple pathways, their effects are complex and difficult to isolate.

Ginsenosides are separated by column chromatography. Ginsenoside content can vary widely depending on species, location of growth, and growing time before harvest.

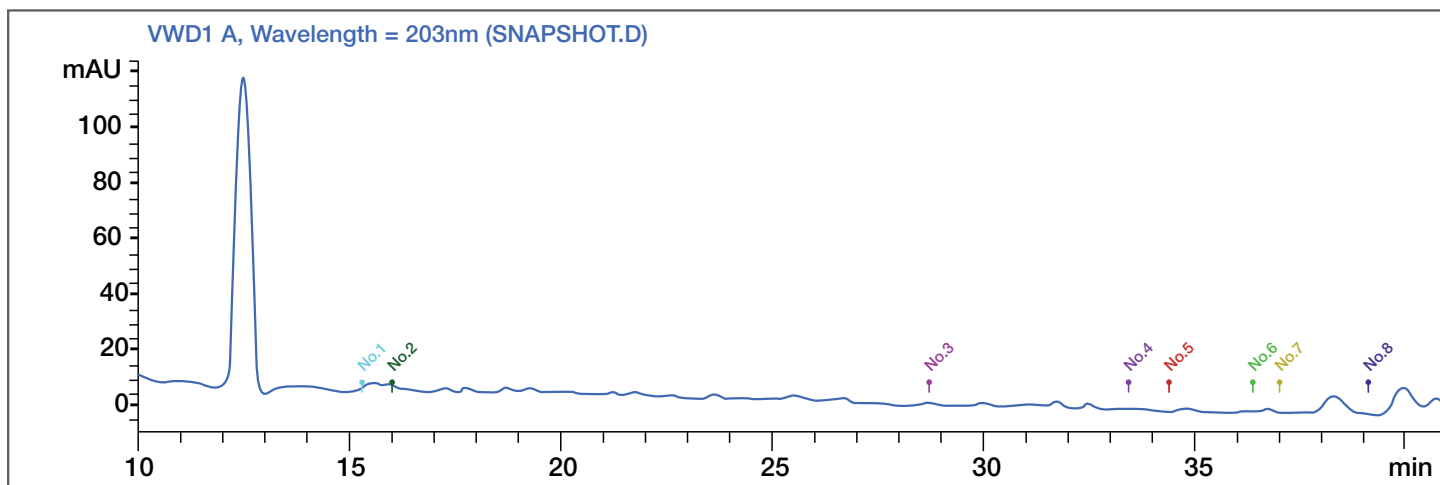
The root, the organ most often used, contains saponin complexes. These are often split into two groups: the Rb1 group (characterized by the protopanaxadiol presence : Rb1, Rb2, Rb3, Rc and Rd) and the Rg1 group (protopanaxatriol: Rg1, Re, Rf).

StemForte® was tested and shown that it also contains the following Ginsenosides: Rb1, Rb2, Rb3, Rc, Rd, Rg1, Re and Rf as active ingredients.



Sample: StemForte®
Lot # 101112
Injection Volume: 5.0
Control Program: Ginsenosides
Recording Time: 2016.09.21
Run Time (min): 40.00

From: NuVi Global
Wavelength: 203
Bandwidth: n.a.
Sample Weight: 1.0000
Sample Amount: 1.0000



No.	Ret. Time min	Area mAU*S	Content/Area	Amount %	Type	Name
1	15.536	40.89192	0.0074%	0.1217%	MM	Rg1
2	15.943	5.35084	0.0081%	0.0174%	MM	Re
3	28.506	4.89484	0.0100%	0.0197%	MM	Rf
4	33.744	7.77353	0.0111%	0.0344%	MM	Rb1
5	34.816	21.43936	0.0093%	0.0797%	MM	Rc
6	36.181	2.04876	0.0089%	0.0073%	MM	Rb2
7	36.683	10.49146	0.0100%	0.0421%	MM	Rb3
8	39.006	12.94305	0.0086%	0.0444%	MM	Rd
Total:				0.3667%		